

**Earth Science Regents**  
Interpreting Topo Maps

Name \_\_\_\_\_

Period \_\_\_\_\_

<http://earthsci.terc.edu/content/investigations/es0307/es0307page01.cfm>

1. What do closely spaced contour lines indicate about the surface of a feature?

\_\_\_\_\_

2. What do widely spaced contour lines indicate about the surface of a feature?

\_\_\_\_\_

3. What is the pattern of the contour lines around a simple hill?

\_\_\_\_\_

4. Find a hilltop on the map below, and lightly shade the top 400 or 500 feet of it with a colored pencil.



5. Find 2 valleys on the map to the left, and using a different color than you used in #4, lightly shade them in.

6. Find the large valley near the center of the map. Use a blue pen or pencil to draw a line on the map where a stream would flow through that valley.

7. Describe the pattern (or shape) of the contour lines where the stream crosses the contour lines

\_\_\_\_\_  
\_\_\_\_\_  
\_\_\_\_\_

8. What compass direction does the stream flow?

\_\_\_\_\_

9. State 2 ways that you can determine the direction of the stream's flow.

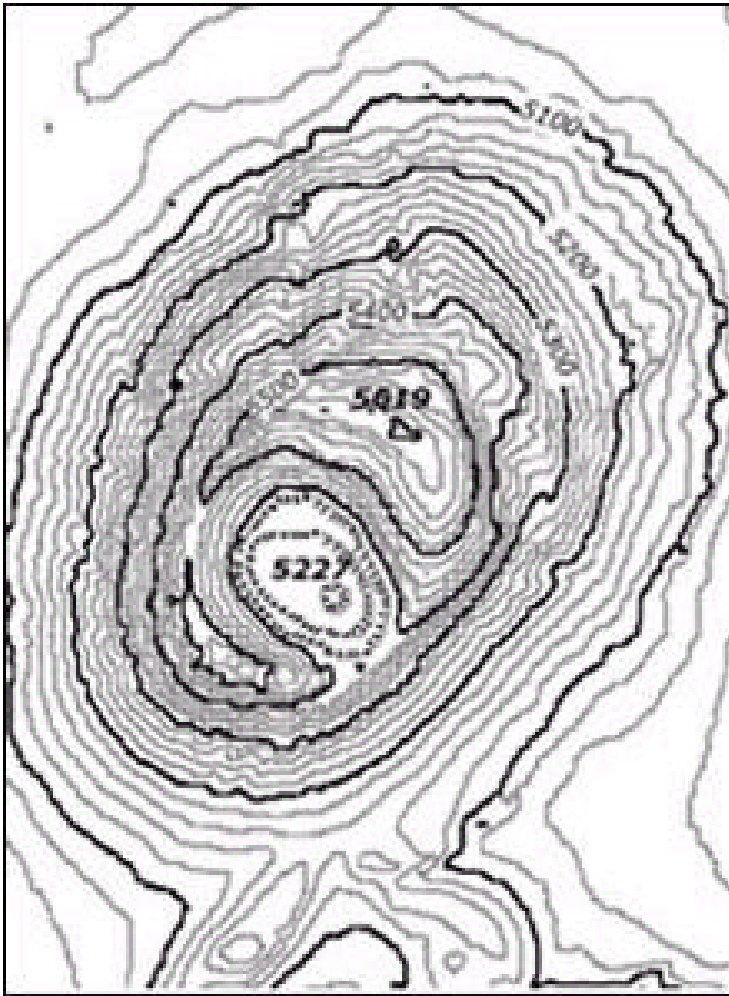
1. \_\_\_\_\_

\_\_\_\_\_

2. \_\_\_\_\_

\_\_\_\_\_

10. What landform feature does the model show, and what do hachures on contour lines indicate?



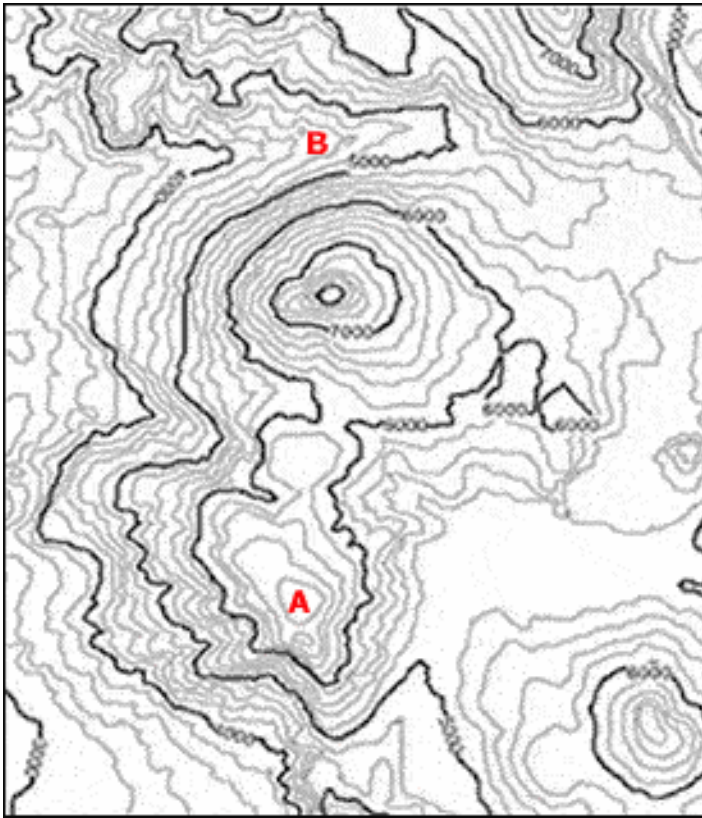
---

---

---

---

---



contour interval = 200ft

11. Identify the features marked at A and B.

A is \_\_\_\_\_

B is \_\_\_\_\_

12. Lightly shade the area of highest elevation on this map

13. Lightly shade the area (s) of lowest elevation

14. Find this place on several of the mapping sites referenced in the investigation.

LATITUDE: **41.1817631**

LONGITUDE: **-73.67701749**